

TRINITY
GUILDHALL

Guitar Initial

Pieces & Exercises
for Trinity Guildhall examinations

2010-2015

00800
guitarnotes™
NOTTINGHAM
£4.50

Contents

Traditional English	The Drunken Sailor	2
Traditional French	Frère Jacques.....	2
J S Bach	Minuet (from <i>The Anna Magdalena Notebook</i>).....	3
MacDowell	To a Wild Rose.....	3
Ryan	Cat Burglar.....	4
Fentimen	Cactus Sunset.....	4
Montgomery	Minor Mood.....	5
Powlesland	Get Up Get Down.....	5
Sollory	King of the Jungle.....	6
	Technical Suite (Exercises).....	7

Duets for this grade:

All duets are from *Guitar Duets Initial-Grade 3 2010-2015* published by Trinity Guildhall (TG 008091).

Rosseter	What then is Love?
Vivaldi <i>arr.</i> Powlesland	Winter
Mozart <i>arr.</i> Sollory	Allegro
Sollory	Si la noche haze escura
Compton	Majorca
Powlesland	Dreamcatcher

Pieces

Three pieces to be performed, chosen from the pieces included in this book or from the duets listed for the grade, to form a balanced programme. Full details of duets are given above and in the current Guitar Syllabus. One piece may be replaced by the candidate's own composition of a similar length and standard to the other pieces chosen. If a duet (or maximum two duets) are chosen, the accompaniment must be played in the examination.

Technical work

See inside back cover for details.

Supporting tests

Two tests to be chosen from **Aural, Improvisation, Musical Knowledge or Sight Reading** at candidate's choice. See the current Guitar Syllabus for details.

Important

Candidates and teachers must refer to the Information & Regulations booklet for all examination requirements and regulations. Syllabuses and further information can be obtained from your Trinity Guildhall Centre Representative or Trinity's Head Office.

**TRINITY
GUILDHALL**

Guitar Initial

Pieces & Exercises
for Trinity Guildhall examinations

2010-2015

Published by:

Trinity College London
89 Albert Embankment
London SE1 7TP UK

T +44 (0)20 7820 6100
F +44 (0)20 7820 6161
E music@trinityguildhall.co.uk
www.trinityguildhall.co.uk

Copyright © 2009 Trinity College London

Unauthorised photocopying is illegal

No part of this publication may be copied or reproduced in any form or by any means without the prior permission of the publisher.

Music processed by Artemis Music Ltd.

Printed in England by Halstan & Co. Ltd, Amersham, Bucks.

The Drunken Sailor

Moderato ♩ = 104–120

Traditional English

Musical score for 'The Drunken Sailor' in 4/4 time, Moderato (♩ = 104–120). The score consists of five staves of music. The first staff starts with a dynamic marking of *mf*. The second staff begins at measure 5. The third staff begins at measure 9 and features a dynamic marking of *f* and several accents. The fourth staff begins at measure 13 and also features accents. The fifth staff begins at measure 17 and includes dynamic markings of *p* and *mp*, as well as a fermata over the final measure.

Copyright © 2009 Trinity College London

Frère Jacques

Andante ♩ = 92–108

Traditional French

Musical score for 'Frère Jacques' in 4/4 time, Andante (♩ = 92–108). The score consists of four staves of music. The first staff starts with a dynamic marking of *pp* and ends with *mf*. The second staff begins at measure 5 and includes dynamic markings of *i*, *m*, *p*, *simile*, *P*, *mf*, and *p*. The third staff begins at measure 9 and includes dynamic markings of *i*, *m*, *p*, *mf*, *i*, *p*, and *i*. The fourth staff begins at measure 13 and includes dynamic markings of *i*, *p*, *i*, *i*, *p*, and *p*. A fermata is placed over the final measure of the fourth staff.

Copyright © 2009 Trinity College London

Minuet

from *The Anna Magdalena Notebook*

Johann Sebastian Bach
(1685-1750)

[♩ = 90-112]

8 *mf*

5 *mf*

9

13 *mf*

Detailed description: This block contains the first 13 measures of the Minuet. It is written in treble clef with a key signature of one sharp (F#) and a 3/4 time signature. The tempo is marked as [♩ = 90-112]. The dynamics are marked as *mf* (mezzo-forte) at measures 1, 5, and 13. The piece features a series of eighth-note patterns with some triplets and a final quarter note. There are two horizontal lines under the staff, likely indicating fingerings or breath marks.

Copyright © 2009 Trinity College London

To a Wild Rose

Edward MacDowell
(1860-1908)

Adagio ♩ = 63-80

8 *mp*

5 *mf* *p i m i p p i m p*

9 *mp*

13 *mf* *p i m p* *mp*

Detailed description: This block contains the first 13 measures of 'To a Wild Rose'. It is written in treble clef with a key signature of two flats (Bb, Eb) and a 2/4 time signature. The tempo is marked as Adagio with a metronome marking of ♩ = 63-80. The dynamics are marked as *mp* (mezzo-piano) at measures 1, 9, and 13. The piece features a series of eighth-note patterns with some triplets and a final quarter note. There are two horizontal lines under the staff, likely indicating fingerings or breath marks. The dynamics *p*, *i*, *m*, and *mp* are indicated above the notes in measures 5 and 13.

Copyright © 2009 Trinity College London

Cat Burglar

Gary Ryan
(born 1969)

Sneekily ♩ = 92-112

Musical score for 'Cat Burglar' in 4/4 time, key of D major. The score consists of three staves of music. The first staff starts with a piano (*p*) dynamic and a mezzo-piano (*mp*) dynamic. The second staff starts with a mezzo-forte (*mf*) dynamic and a mezzo-piano (*mp*) dynamic. The third staff starts with a piano (*p*) dynamic and ends with a fortissimo (*ff*) dynamic. The score includes various musical notations such as eighth notes, quarter notes, and chords, along with dynamic markings and a first ending bracket labeled (1).

To be played entirely with the right-hand thumb. All chords to be strummed lightly and quickly.

(1) Look over your shoulder.

Copyright © 2009 Trinity College London

Cactus Sunset


Phil Fentimen

Andante ♩ = 88-104

Musical score for 'Cactus Sunset' in 4/4 time, key of D major. The score consists of three staves of music. The first staff starts with a mezzo-forte (*mf*) dynamic and a forte (*f*) dynamic. The second staff starts with a piano (*p*) dynamic and a mezzo-forte (*mf*) dynamic. The third staff starts with a piano (*p*) dynamic and ends with a mezzo-piano (*mp*) dynamic. The score includes various musical notations such as eighth notes, quarter notes, and chords, along with dynamic markings and a 'rall.' marking.

Minor Mood

Roger Montgomery
(born 1947)

Andante with swing ♩ = 80-100 ♪♪ = 



Musical score for 'Minor Mood' in 4/4 time, featuring a single melodic line in treble clef. The score consists of five staves of music. The first staff begins with a dynamic marking of *mf*. The second staff has a measure number '4' at the beginning. The third staff has measure numbers '7' and '3' and a dynamic marking of *p*. The fourth staff has measure numbers '10' and '11', dynamic markings of *mp* and *mf*, and includes first and second endings. The fifth staff has a measure number '13' at the beginning.

Copyright © 2009 Trinity College London

Get Up Get Down

Nicholas Powlesland

Groovy ♩ = 88-108



Musical score for 'Get Up Get Down' in 4/4 time, featuring a single melodic line in treble clef. The score consists of five staves of music. The first staff begins with a dynamic marking of *f*. The second staff has a measure number '5' at the beginning and dynamic markings of *p* and *f*. The third staff has measure numbers '9' and '10' and dynamic markings of *mf*, *pp*, and *mf*. The fourth staff has a measure number '13' at the beginning and a dynamic marking of *pp*. The fifth staff has a measure number '17' at the beginning and a dynamic marking of *f*.

Copyright © 2009 Trinity College London

King of the Jungle

Lee Sollory
(born 1959)

Allegro ♩ = 120–138

8 *mf*

5 *pont.*

9 *nat.*
f

13 *pont.*

17 *nat.*
pp ————— *f*

Technical Suite (Exercises)

Candidates choosing Option ii) Technical Suite in the Technical Work section of the examination must prepare the following exercises.

1. Roller Coaster (scales)

To be prepared *apoyando* or *tirando* at candidate's choice.*

♩ = 50–60

4

2. A Minor Moment (string crossing)

To be prepared *apoyando* or *tirando* at candidate's choice.

♩ = 50–60

5

* *apoyando* = rest stroke; *tirando* = free stroke.

3. Deep End of the Pool (thumb articulation)

To be prepared *apoyando* or *tirando* at candidate's choice. Played with RH thumb.

♩ = 50–60

Musical notation for exercise 3, titled "Deep End of the Pool (thumb articulation)". It is written on a single treble clef staff in 4/4 time. The piece consists of 12 measures. The first measure starts with a piano (*p*) dynamic, and the second measure starts with a mezzo-forte (*mf*) dynamic. The notes are: G4 (quarter), A4 (quarter), B4 (quarter), C5 (quarter), B4 (quarter), A4 (quarter), G4 (quarter), F4 (quarter), E4 (quarter), D4 (quarter), C4 (quarter), B3 (quarter). The piece ends with a double bar line.

4. Right Hand Exercises

a)

To be prepared *tirando*.

♩ = 50–60

Musical notation for exercise 4a. It is written on a single treble clef staff in 4/4 time. The piece consists of 12 measures. The first measure starts with a mezzo-forte (*mf*) dynamic. The notes are: G4 (quarter), A4 (quarter), B4 (quarter), C5 (quarter), B4 (quarter), A4 (quarter), G4 (quarter), F4 (quarter), E4 (quarter), D4 (quarter), C4 (quarter), B3 (quarter). Above the notes, fingerings are indicated: *p i p i p i p i p i m*. The piece ends with a double bar line.

b)

To be prepared *tirando*.

♩ = 50–60

Musical notation for exercise 4b. It is written on a single treble clef staff in 4/4 time. The piece consists of 12 measures. The first measure starts with a mezzo-forte (*mf*) dynamic. The notes are: G4 (quarter), A4 (quarter), B4 (quarter), C5 (quarter), B4 (quarter), A4 (quarter), G4 (quarter), F4 (quarter), E4 (quarter), D4 (quarter), C4 (quarter), B3 (quarter). Above the notes, fingerings are indicated: *p i p i m i m i p i m i p*. The piece ends with a double bar line.

Technical work

Candidates to prepare *either* i) or ii)

either i) Scales and Arpeggio (to be performed from memory)

As given in *Guitar & Plectrum Guitar Scales & Exercises from 2007* published by Trinity Guildhall.

Scales

The following scales to be performed *mf*, with *im* right hand fingering unless otherwise stated.

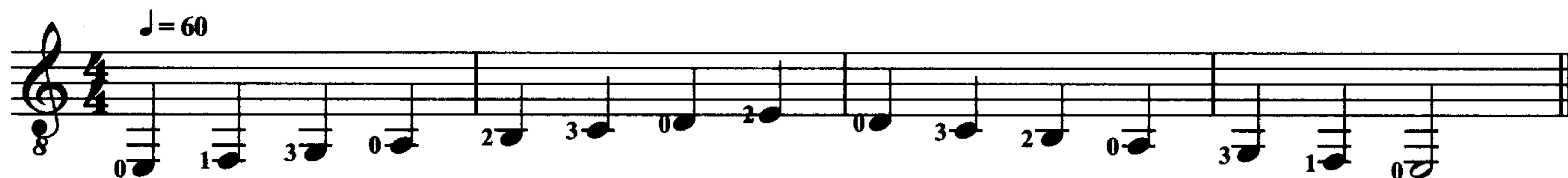
Candidate's choice of *apoyando* or *tirando* unless specified.

C major (to 5th, ascending and descending)

G major (to 5th, ascending and descending)

A minor (to 5th, ascending and descending)

Phrygian starting on E (one octave, with R.H. thumb) (*tirando*):



Arpeggio

The following arpeggio to be performed *mf*:

D minor (to 5th, ascending and descending) (*tirando*)

or ii) Technical Suite

Exercises

Candidates to prepare all of the following exercises, printed in this book:

1. Roller Coaster (*scales*)
2. A Minor Moment (*string crossing*)
3. Deep End of the Pool (*thumb articulation*)
4. Right Hand Exercises

All pieces in this volume have been edited with regard to current concepts of performance practice. Dynamics and fingering have been suggested to assist candidates and their teachers in developing their own interpretations.

Recommended metronome markings are given as a useful, but not definitive, performance guide for all pieces. Those without square brackets are the composer's own indication of the appropriate speed for the music.

Repeats of more than three bars should be omitted unless instructed otherwise in the syllabus or Trinity music book, but all da capo and dal segno instructions should be observed.

Every effort has been made to trace and acknowledge the copyright owners. If any right has been omitted or if any detail is incorrect, Trinity College London apologises and will rectify this in any subsequent reprints following notification.

Selected guitar pieces from the Trinity Guildhall Guitar Syllabus 2010-2015.

Initial

Contents

Traditional English	The Drunken Sailor.....	2
Traditional French	Frère Jacques.....	2
J S Bach	Minuet (from <i>The Anna Magdalena Notebook</i>).....	3
MacDowell	To a Wild Rose.....	3
Ryan	Cat Burglar.....	4
Fentimen	Cactus Sunset.....	4
Montgomery	Minor Mood.....	5
Powlesland	Get Up Get Down.....	5
Sollory	King of the Jungle.....	6
	Technical Suite (Exercises).....	7

The following support materials are also available from your local music shop:

Guitar Examination Pieces Initial-Grade 5 2010-2015 CD – recordings of all the pieces and exercises contained in these publications (TG 008107).

Also includes recordings of the duets published in **Guitar Duets 2010-2015 Initial-Grade 3** (TG 008091). Performed by Carlos Bonell, with Abigail James.



All syllabuses and further information about Trinity Guildhall can be obtained from:

Trinity Guildhall
89 Albert Embankment
London SE1 7TP UK

T +44 (0)20 7820 6100

F +44 (0)20 7820 6161

E music@trinityguildhall.co.uk

www.trinityguildhall.co.uk/music

GUITARNOTES
SGC, 44 NOTTINGHAM ROAD
NOTTINGHAM NG7 7AE
www.guitarnotes.co.uk
TEL: 0115 962 2709
FAX: 0115 962 5368

TG 008008
ISMN 9790570380329



9 790570 380329